



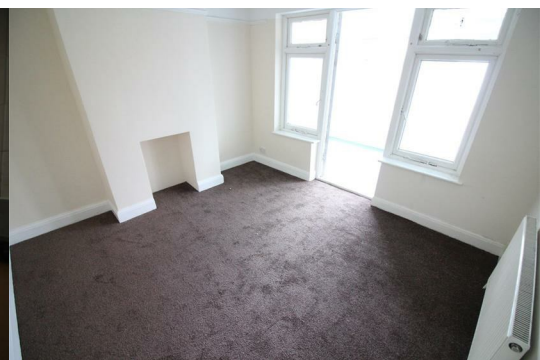
Waltham Avenue

Hayes, UB3 1TD

£2,100 Per month



Spacious, modern and well situated, three or four bedroom family home to rent in Hayes. Close to local buses, shops, parks and schools, this would make a great new long term home. Lots of storage space, private garden, off street parking, a separate kitchen and conservatory. Ready to view now.



Spacious, modern and well situated, three or four bedroom family home to rent in Hayes. Close to local buses, shops, parks and schools, this would make a great new long term home. Lots of storage space, private garden, off street parking, a separate kitchen and conservatory. Ready to view now.

We are delighted to be able to offer for rent this spectacular, well presented and larger than average, three or four bedroom family home.

Situated on a very quiet, residential street, just a short walk from Hayes & Harlington railway station and its Elizabeth line connections, as well as Hayes town, Pinkwell park, Heathrow airport, Stockley park, the M4, M25, M40 and other major amenities.

The property would make a great new long term family home.

- Features include;
- A huge separate front reception room
 - A separate rear reception room
 - A large conservatory or dining room to the rear of the property
 - A separate fitted kitchen
 - Upstairs, there are two large double bedrooms and a spacious single bedroom, all bedrooms have built in wardrobes
 - The bathroom suite has a bath tub, shower, WC and sink
 - Gas central heating
 - Double glazing
 - A quiet residential street, within walking distance of amenities
 - Close to schools, shops, parks, buses
 - Wooden flooring throughout
 - Neutral decor
 - Off street parking
 - Driveway
 - Available from early May
 - Ready to view now
 - Long term let
 - Partially furnished

Call our office today to organise an appointment to view.

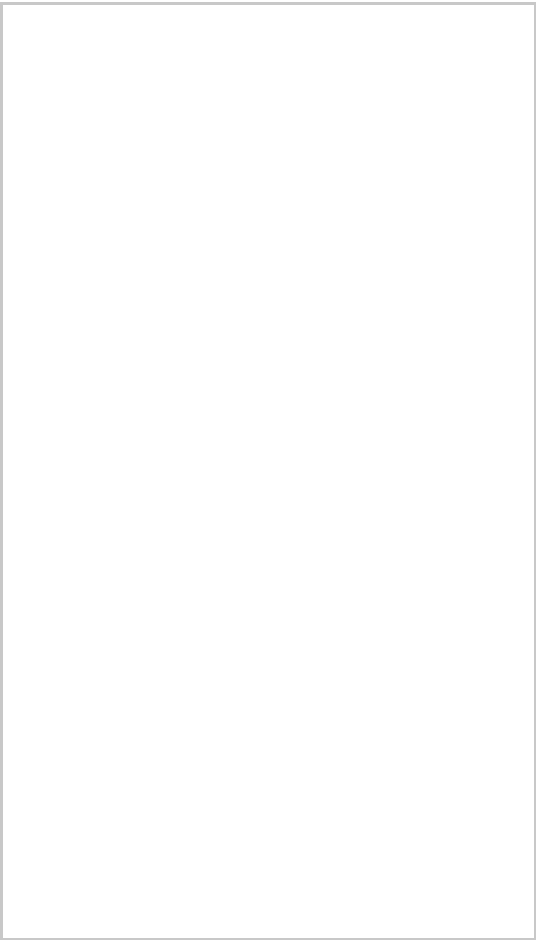
- Three bedrooms
- Semi detached house
- Long term let
- Driveway parking
- Private rear gardens
- Separate kitchen
- Lots of storage space
- Gas central heating and double glazing
- Built in wardrobes
- Close to Hayes town

Please contact Vine Estates on 020 3744 1177 if you wish to arrange a viewing appointment for this property or require further information.

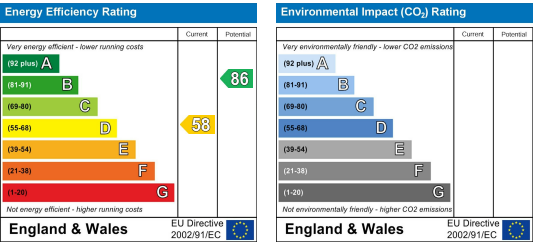
Area Map



Floor Plans



Energy Efficiency Graph



These particulars, whilst believed to be accurate are set out as a general outline only for guidance and do not constitute any part of an offer or contract. Intending purchasers should not rely on them as statements of representation of fact, but must satisfy themselves by inspection or otherwise as to their accuracy. No person in this firms employment has the authority to make or give any representation or warranty in respect of the property.